

The Hitch 'N Post

www.hpfeedandtack.com

OCTOBER 2019, VOL. III

A LOCAL ALBUM RELEASE



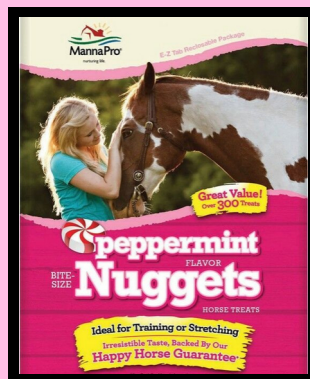
Our own OPA singer/songwriter

Amanda Kate, an Orange Park Acres local, has just released her debut album, "TIME." The album is dedicated to her mother, Kathy, her best friend, songwriting partner, and riding partner, and one of our long time customers. You can order "TIME" at amandakatemusic.com, and you can find Amanda singing regularly with The Country Club Band and as the lead singer for Blown Away, A Tribute To Carrie Underwood.



TREAT OF THE MONTH

Big Red chose **Manna Pro Peppermint Nuggets** as the treat for October. Treat Club Members can stop by anytime for endless refills!



OCTOBER GIVEAWAY



In honor of October being Breast Cancer Awareness Month, we're giving away a basket of pink-themed goodies! Stop by the store and **enter to win!**

NEIGH-BORHOOD NEWS

The Smallest Horse Ambassador

Mini Cooper the Mini loves his job as a Horse Ambassador for Santiago Oaks Regional Park.

He helps educate the public about sharing trails with equestrians--many visitors who come across riders don't know how to behave around horses. As the smallest horse patrolling the Oaks, he's very approachable for visitors, especially ones who have never been close to a horse before! He's happy to keep the park safer for all who come to enjoy it, and loves the attention from visitors!



ASK A FARRIER

Steve Vaughan, serving the hoof beats of America since 1972.

Farrier Steve Vaughan says the most common question he's asked is "**What is White Line Disease?**" It's a fungal infection that affects the white line of a horse's hoof, which connects the sole to the hoof wall."

The primary reasons are the mechanical stresses that allow infection to take hold in the first place. Poor hoof conformity, concussion on hard ground, long toes, overweight horses, and prior conditions such as abscesses," Steve says.

"It's a white, powdery-looking substance between the outside wall and where it meets the sole of the foot. Attacking the lamina, it can get into the structure of the hoof. This can affect both shod and barefoot horses. Best treatment is to catch it early. Open to the air, treat with a copper sulfate powder and pack affected area to keep it dry. If caught early, supported correctly and treated, white line should not be a problem."



Last month's answer: Santiago Oaks Trailhead



Like us:

@Hitch 'N Post Feed & Tack



Follow us:

@hpfeed_orange



Call us:

714-771-2233